

GENERAL	
Overall Length	53' 7" (Excluding dock bumpers)
Overall Width	96"
Overall Height	55"
Fifth Wheel Height	47 ± 1"
Max. Rear Height	48 ± 1"
Kingpin Location	36" (From the rear face of the front bolster)
Landing Gear Location	94" (From the centerline of kingpin)
Axle Spread	49"
Slider Bogie Setting	90" travel in 6" increment
Tare Weight	7,450 lbs ± 2%
Payload	67,200 lbs
STEEL STRUCTURE & COMPONENTS	
Main beam	W12@16lb/ft hot-rolled H-beam, ASTM A572 Grade 50 or equivalent
Cross member	1/8" & 3/16" thick full height channel with profiled bar type diagonal brace. Local supplier (Vietnam)
GN member	4" deep x 4" wide fabricated H-beam, 5/8" thick flanges and 5/16" thick web. ASTM GR100
Upper Coupler	1/4" pick up plate with JOST (USA) 2" diameter square type king pin per SAE standard, 380-420 HB, with 2" water drain holes, design to be integrated with main frame through welding
Front Bolster	7-3/8" wide x 7-3/4" high x 1/4" thick open section, with 2-3/8" chamfer in full length for gathering container in operation. 7-way receptacle and glad hands are located on the roadside of front bolster. Bent corner caps
Rear Bolster	8" wide x 3/8" thick top plate with 7" wide x 6-5/8" deep x 3/16" thick "U" type bottom channel. Local supplier (Vietnam)
Rear Bumper	4" x 4" x 3/16" square tube step with taper "H" section vertical member. Bar is bolted to uprights. The bumper is bolted to main beam. Local supplier (Vietnam)
License plate bracket	Extending from rear bolster within envelope of ICC bumper. Plate is to contain rear cluster lights, rear fleet number & license plate. Local supplier (Vietnam)
Sliding suspension frame	HENDRICKSON (USA) AAZNT 46K lightweight chassis platform slider with 4 index pins. QUIK-DRAW® pneumatic pin-pull mechanism with removable and replaceable pin cage.
Front Locking pin	BUFFERS (India)
Rear twist Lock	BUFFERS (India)
Landing Gear	SAF-HOLLAND (USA) ATLAS65 with 65,000 lbs capacity, 2-speed 17" travel with low "T" shoes Crank handle is located on the driver's side of the chassis. Pre-painted BLACK color Landing gear brackets are bolted on the main beam as the layout
Suspension	HENDRICKSON (USA) AAZNT 46K with 46,000 lbs capacity fit to 96" trailer width, 37" I-beam center, and 16" ride height, standard shock absorbers
Axles	HENDRICKSON (USA) 5.75" round axles with 22500lb capacity; 71.5" track, 16.5"x7" 4515Q brake Dust shields are provided. Pre-painted BLACK color 1.5-28 spline, HALDEX 5.5" automatic slack adjusters Non-reserved PSI interface; Heat Sensing Labels Axle Installation orientation: 90 degrees REAR, chambers DOWN (1 non ABS front, 1 ABS rear per unit)
Wheel end	HENDRICKSON (USA) HXL5 wheel-end package. (5-year warranty) Included Non-PSI grease hub caps and Long studs for installing Aluminum wheels
Lubricant	Semi-fluid grease lubricant
Wheels	ALCOA (Hungary) 22.5 x 8.25 10-stud hub-piloted Aluminum wheels.
Tires	WESTLAKE (Thailand) 11R22.5-14PR tubeless type
Brake System	SEALCO (USA) 110800 spring brake priority valve system and BENDIX (USA) TABS-6 RSS+ 2S/1M ABS system. PHILLIPS (Vietnam) glad hand 12-0061 and 12-0081. TECTRAN (USA) 3/8" blue air tube for control and 3/8" red for supply. HENDRICKSON (USA) T30/30, 2.5" stroke brake chamber. THACO CMC (Vietnam) air tank (Pre-painted BLACK color)
Electrical	PHILLIPS (Mexico) mold seal wiring harness, Reserved PSI and GPS connector. OPTRONICS (Taiwan) LED lights (amp connections for S/T/T lights and .180 bullets for others). The theft proof design used for 4" LED lighting
Electrical Receptacle	PHILLIPS (Mexico) 16-724 plastic material with split pins
Document Holder	THACO CMC (Vietnam) . Installed on roadside near crank handle
Conspicuity tape	"3M" (Singapore) brand. Installed per federal regulations
Painting	Abrasive blast of all metal surfaces - not less than SA-2.5 to achieve clean bare steel. Surface will be coated with electrophoresis primer and powder topcoat. Color BLACK RAL9005 and at the corner painted YELLOW color. Total thickness not less than 80µm after dry membrane. Coating supplier: PPG (Vietnam)
Marking	Standard configuration (includes Thaco Trailers Decal, layout, VIN, nameplate). Local supplier (Vietnam)
Hubodometer	STEMCO (USA)
Tire Inflation System	NONE
Mud flaps	THACO Plastic Components (Vietnam) 24"x24"x1/4" White PVC mud flaps with 3 mounting holes and with "Thaco Trailers" logo



Thaco Trailers

53' GOOSENECK SLIDER TANDEM



Retracted Length	Overall Width	Overall Height	Payload	Tare Weight
53' 7"	96"	55"	67,200 lbs	7,450 lbs

Engineered for exceptional heavy-duty capabilities, this chassis is designed to handle ISO 53' containers, making it an ideal choice for specialized industrial applications.



**THACO INDUSTRIES TRAILERS AND HEAVY STEEL STRUCTURES
MANUFACTURING LIMITED LIABILITY COMPANY**

© THACO Chu Lai Industrial Park, Nui Thanh District, Quang Nam Province, Vietnam
☎ (+84) 933 805 707 ✉ thacosv@thaco.com.vn

www.thacotrailers.com

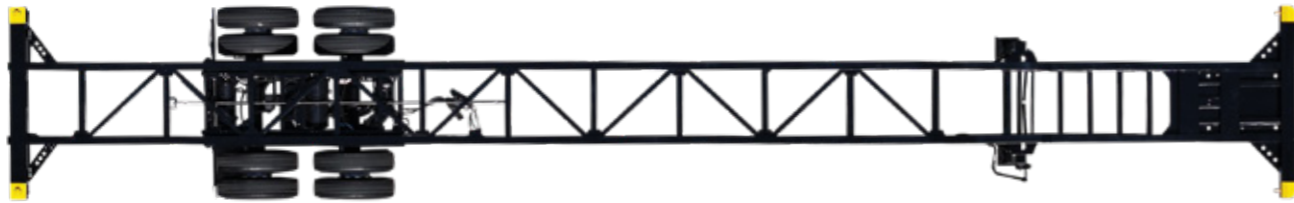
STRENGTH - VERSATILITY – PERFORMANCE

Thaco Trailers equipped cutting-edge technologies to create durable and reliable products



CHASSIS

Modern design with the most advanced technology, high-strength alloy steel materials, solid structure increase the load capacity with high stability.



AXLES

HENDRICKSON (USA) 5.75" round axles with 22,500 lbs capacity increases load capacity and improves handling significantly.



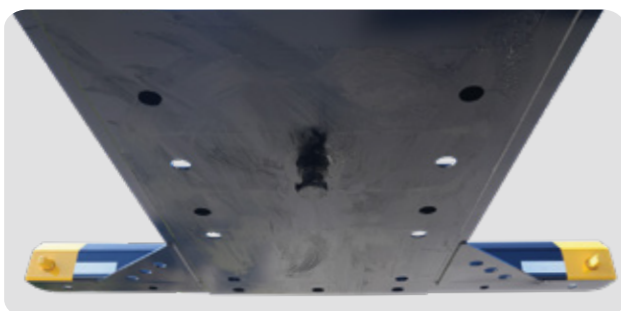
SUSPENSION SYSTEM

Hendrickson (USA) AAZNT 46K with 46,000 lbs capacity, features advanced ZMD technology, eliminating external shock absorbers for superior ride quality and significantly reduced trailer maintenance.



UPPER COUPLER

1/4" pick up plate with **JOST (USA)** 2" diameter square type king pin per SAE standard is a strong and reliable connection between the tractor and trailer.



LANDING GEAR

SAF-HOLLAND (USA) ATLAS65 with 65,000 lbs capacity, makes trailer lift and lower operations easier when connecting a tractor.



PAINTING

Surface treatment and painting processes including shot blasting, ED primer and powder topcoat are standard technical requirements.

- Paint finishes are warranted for up to 7 years.
- 1,000 hours of salt spray testing.



WHEELS & TIRES

ALCOA (Hungary) 22.5 x 8.25 10-stud hub-piloted Aluminum wheels are durable, precise, and safe wheels for heavy-duty trucks.

WESTLAKE (Thailand) 11R22.5-14PR tubeless type provides good traction on various terrains.



ELECTRICAL SYSTEM

PHILLIPS (Mexico) mold seal wiring harness, protects wires from environmental factors and damage.

OPTRONICS (Taiwan) LED lights are designed to be theft-resistant and withstand harsh conditions.



BRAKE SYSTEM

SEALCO (USA) 110800 spring brake priority valve system improves vehicle performance and safety.

BENDIX (USA) TABS-6 Roll Stability System+ 2S/1M ABS system enhances trailer stability and braking performance to ensure safe and efficient transportation.



STANDARD INFORMATION

- This chassis meets all DOT, AAR, ANSI, TOFC, F(C)MVSS, SAE and TTMA certifications.
- Locally-sourced components: Main frame, suspension system, leaf spring,...

